

# Producing and translating User guides



# Joining the LibreOffice Documentation Team

- Who we are and what we do



# *Joining the LibreOffice Documentation Team*

---

- Who we are and what we do
- Where we work

<http://www.odfauthors.org/libreoffice/english>

[http://wiki.documentfoundation.org/Documentation.](http://wiki.documentfoundation.org/Documentation)

<http://libodocs.wordpress.com/>



# *Joining the LibreOffice Documentation Team*

---

- Who we are and what we do
- Where we work

<http://www.odfauthors.org/libreoffice/english>

[http://wiki.documentfoundation.org/Documentation.](http://wiki.documentfoundation.org/Documentation)

<http://libodocs.wordpress.com/>

- Logins needed

# *Joining the LibreOffice Documentation Team*

---

- Who we are and what we do

- Where we work

<http://www.odfauthors.org/libreoffice/english>

[http://wiki.documentfoundation.org/Documentation.](http://wiki.documentfoundation.org/Documentation)

<http://libodocs.wordpress.com/>

- Logins needed
- How you can help

# *Joining the LibreOffice Documentation Team*

---

- Who we are and what we do
- Where we work

<http://www.odfauthors.org/libreoffice/english>

[http://wiki.documentfoundation.org/Documentation.](http://wiki.documentfoundation.org/Documentation)

<http://libodocs.wordpress.com/>

- Logins needed
- How you can help
- How to get started



# ***Producing LibreOffice User Guides***

- **How to set up LibreOffice for working with user guides**

<http://www.odfauthors.org/libreoffice/english/resources-for-contributers>

# *Producing LibreOffice User Guides*

- How to set up LibreOffice for working with user guides
- How to create a new chapter from the template
  - Change General options

## Open/Save dialogs

☒ Use LibreOffice dialogs

## Print dialogs

☒ Use LibreOffice dialogs

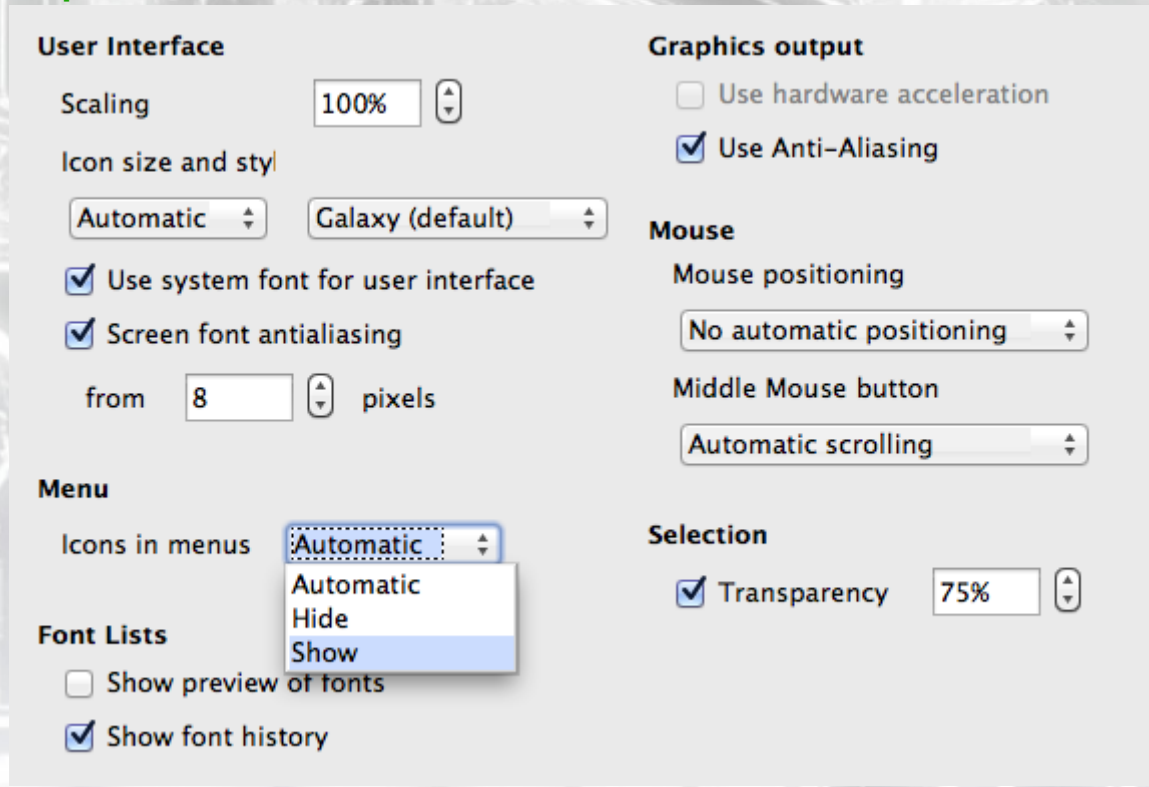


# *Producing LibreOffice User Guides*

- How to set up LibreOffice for working with user guides
- How to create a new chapter from the template
  - Change General options
  - Change View options

# Producing LibreOffice User Guides

- How to set up LibreOffice for working with user guides
- How to create a new chapter from the template
  - Change General options
  - Change View options



# *Producing LibreOffice User Guides*

- How to set up LibreOffice for working with user guides
- How to create a new chapter from the template
  - Change General options
  - Change View options
  - Change Memory options



# *Producing LibreOffice User Guides*

- How to set up LibreOffice for working with user guides
- How to create a new chapter from the template
  - Change General options
  - Change View options
  - Change Memory options
  - Change Advanced options
  - Download and install the chapter template
  - (If necessary) Download and install the Liberation fonts

Abcdefghijklmnopqrstuvwxyz 1234567890

# *Producing LibreOffice User Guides*

- How to set up LibreOffice for working with user guides
- How to create a new chapter from the template
  - Change General options
  - Change View options
  - Change Memory options
  - Change Advanced options
  - Download and install the chapter template
  - (If necessary) Download and install the Liberation fonts
  - (Optional) Download and install the LO Docs Team .bau file
  - (Optional) Create AutoText entries for Tip, Note, Caution, and data tables

Caution



# *Producing LibreOffice User Guides*

- How to set up LibreOffice for working with user guides
- How to create a new chapter from the template
  - Change General options
  - Change View options
  - Change Memory options
  - Change Advanced options
  - Download and install the chapter template
  - (If necessary) Download and install the Liberation fonts
  - (Optional) Download and install the LO Docs Team .bau file
  - (Optional) Create AutoText entries for Tip, Note, Caution, and data tables
- How to create a new chapter from the template



# *Producing LibreOffice User Guides*

- How to create images for LibreOffice user guides
  - Screen captures

# *Producing LibreOffice User Guides*

- How to create images for LibreOffice user guides
  - Screen captures
  - Cropping



# *Producing LibreOffice User Guides*

- How to create images for LibreOffice user guides
  - Screen captures
  - Cropping
  - Annotation (labeling)



# *Producing LibreOffice User Guides*

- How to create images for LibreOffice user guides
  - Screen captures
  - Cropping
  - Annotation (labeling)
  - Flowcharts and other diagrams

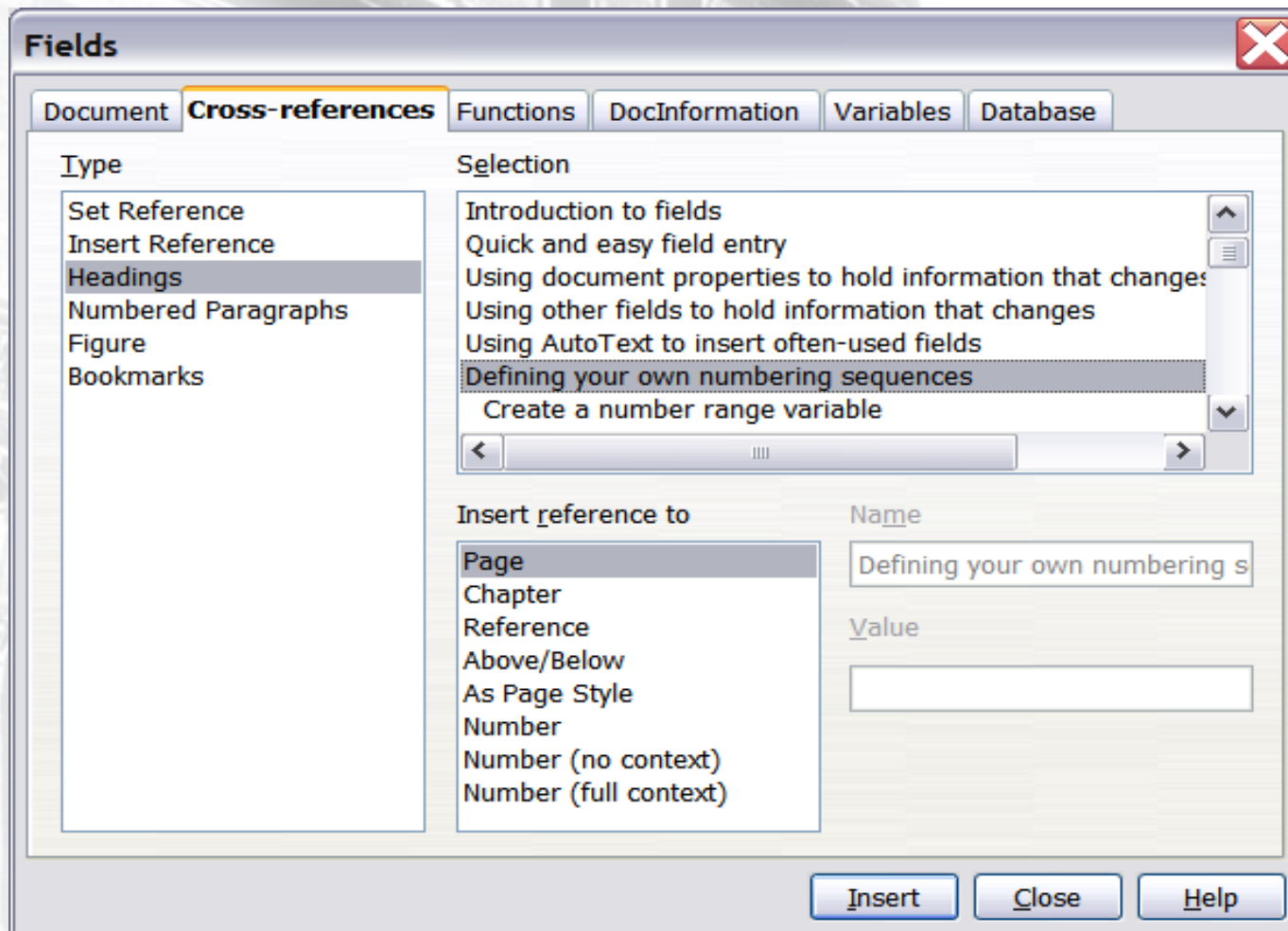
# *Producing LibreOffice User Guides*

- How to create images for LibreOffice user guides
  - Screen captures
  - Cropping
  - Annotation (labeling)
  - Flowcharts and other diagrams
- How to insert images into ODT files

# *Producing LibreOffice User Guides*

- How to create images for LibreOffice user guides
  - Screen captures
  - Cropping
  - Annotation (labelling)
  - Flowcharts and other diagrams
- How to insert images into ODT files
- How to cross-reference within a document
  - Cross-referencing to figures, tables, headings, other items





# *Producing LibreOffice User Guides*

- How to create images for LibreOffice user guides
  - Screen captures
  - Cropping
  - Annotation (labeling)
  - Flowcharts and other diagrams
- How to insert images into ODT files
- How to cross-reference within a document
  - Cross-referencing to figures, tables, headings, other items

# *Producing LibreOffice User Guides*

- How to create images for LibreOffice user guides
  - Screen captures
  - Cropping
  - Annotation (labeling)
  - Flowcharts and other diagrams
- How to insert images into ODT files
- How to cross-reference within a document
  - Cross-referencing to figures, tables, headings, other items
- How to cross-reference to another document



# *Producing LibreOffice User Guides*

- How to create images for LibreOffice user guides
  - Screen captures
  - Cropping
  - Annotation (labelling)
  - Flowcharts and other diagrams
- How to insert images into ODT files
- How to cross-reference within a document
  - Cross-referencing to figures, tables, headings, other items
- How to cross-reference to another document
- How to review a chapter
  - What to look for in a review

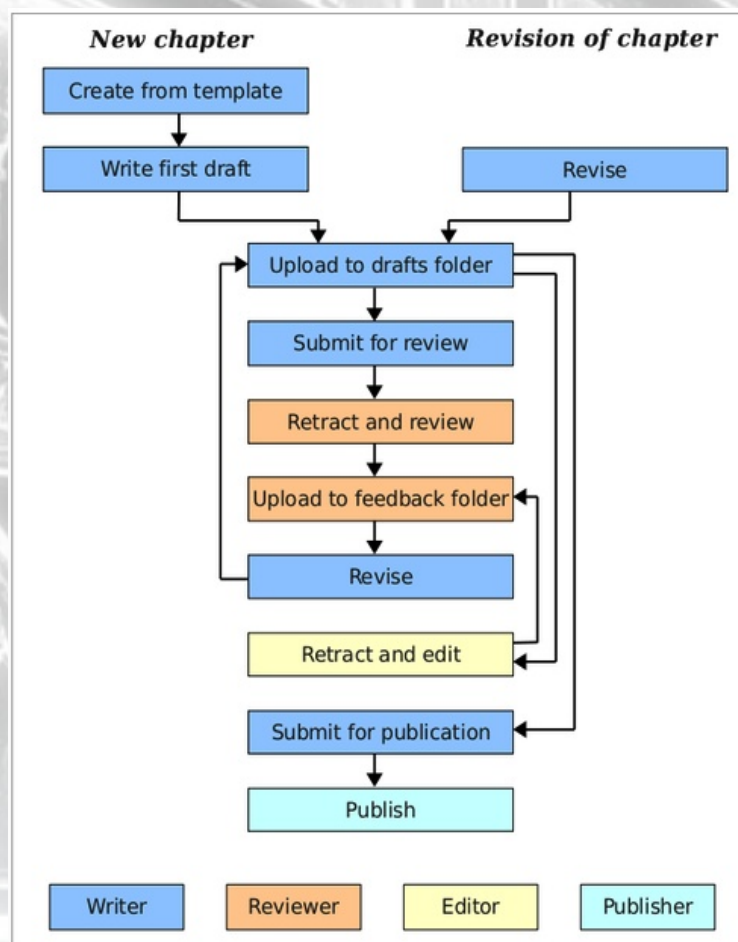
# *Producing LibreOffice User Guides*

- How to create images for LibreOffice user guides
  - Screen captures
  - Cropping
  - Annotation (labelling)
  - Flowcharts and other diagrams
- How to insert images into ODT files
- How to cross-reference within a document
  - Cross-referencing to figures, tables, headings, other items
- How to cross-reference to another document
- How to review a chapter
  - What to look for in a review
- How to publish a chapter

# Using the ODFAuthors site

- Workflow for producing user guide chapters

- Workflow description





# *Using the ODFAuthors site*

---

- Workflow for producing user guide chapters
  - Workflow description
- Creating a new user guide chapter
  - Creating a completely new chapter
  - Creating a new chapter based on an existing chapter

# *Using the ODFAuthors site*

---

- Workflow for producing user guide chapters
  - Workflow description
- Creating a new user guide chapter
  - Creating a completely new chapter
  - Creating a new chapter based on an existing chapter
- Revising an existing user guide chapter

# *Using the ODFAuthors site*

---

- Workflow for producing user guide chapters
  - Workflow description
- Creating a new user guide chapter
  - Creating a completely new chapter
  - Creating a new chapter based on an existing chapter
- Revising an existing user guide chapter
- Submitting a chapter for review



# *Using the ODFAuthors site*

---

- Workflow for producing user guide chapters
  - Workflow description
- Creating a new user guide chapter
  - Creating a completely new chapter
  - Creating a new chapter based on an existing chapter
- Revising an existing user guide chapter
- Submitting a chapter for review
- Reviewing a chapter
  - Downloading a chapter for review
  - Uploading a chapter after review

# *Using the ODFAuthors site*

---

- Workflow for producing user guide chapters
  - Workflow description
- Creating a new user guide chapter
  - Creating a completely new chapter
  - Creating a new chapter based on an existing chapter
- Revising an existing user guide chapter
- Submitting a chapter for review
- Reviewing a chapter
  - Downloading a chapter for review
  - Uploading a chapter after review
- Publishing a chapter

I have some answers but maybe you have some questions???



All text and image content in this document is licensed under the [Creative Commons Attribution-Share Alike 3.0 License](#) (unless otherwise specified). "LibreOffice" and "The Document Foundation" are registered trademarks. Their respective logos and icons are subject to international copyright laws. The use of these therefore is subject to the [trademark policy](#).

